

Exploring the Potential of AI in Conceptualizing Auditorium Designs

2024 / 2026

In our ongoing quest to conceptualize the perfect auditorium, we've been experimenting with AI-driven tools to visualize and refine our ideas. The results have been nothing short of astonishing. When we provide a detailed description, the AI generates a variety of interpretations, each offering a unique perspective on our vision. This process is incredibly insightful, as it not only broadens our creative horizons but also helps us process and synthesize these diverse impressions into a cohesive and compelling final concept.

By leveraging AI, we are able to explore numerous design possibilities rapidly, identify the most promising aspects, and refine our ideas with greater precision and confidence. The iterative nature of this process ensures that our final design is not only innovative but also well-grounded in a multitude of inspired ideas.

This experience underscores the value of integrating AI into our design workflows. It enhances our ability to visualize complex concepts and facilitates a more dynamic and collaborative approach to architectural design.

As we continue to harness the power of AI, we look forward to seeing how it can further transform our creative processes and lead us to groundbreaking solutions. The journey from initial concept to final realization is an exciting one, and AI is proving to be a valuable companion along the way.

Content

Page 2 – Clerestory Arena

Page 3 – Hall of Timber Acoustics

Page 4 – Carved Light Auditorium

Page 5 – The Spine Hall

Page 6 – Continuous Shell Auditorium

Page 7 – Forum for Performance and Assembly

Page 8 – Chamber of Warm Resonance

Page 9 – Vaulted Organ Auditorium

Overall design reading

Across pages 2–9, the concepts can be grouped into four families:

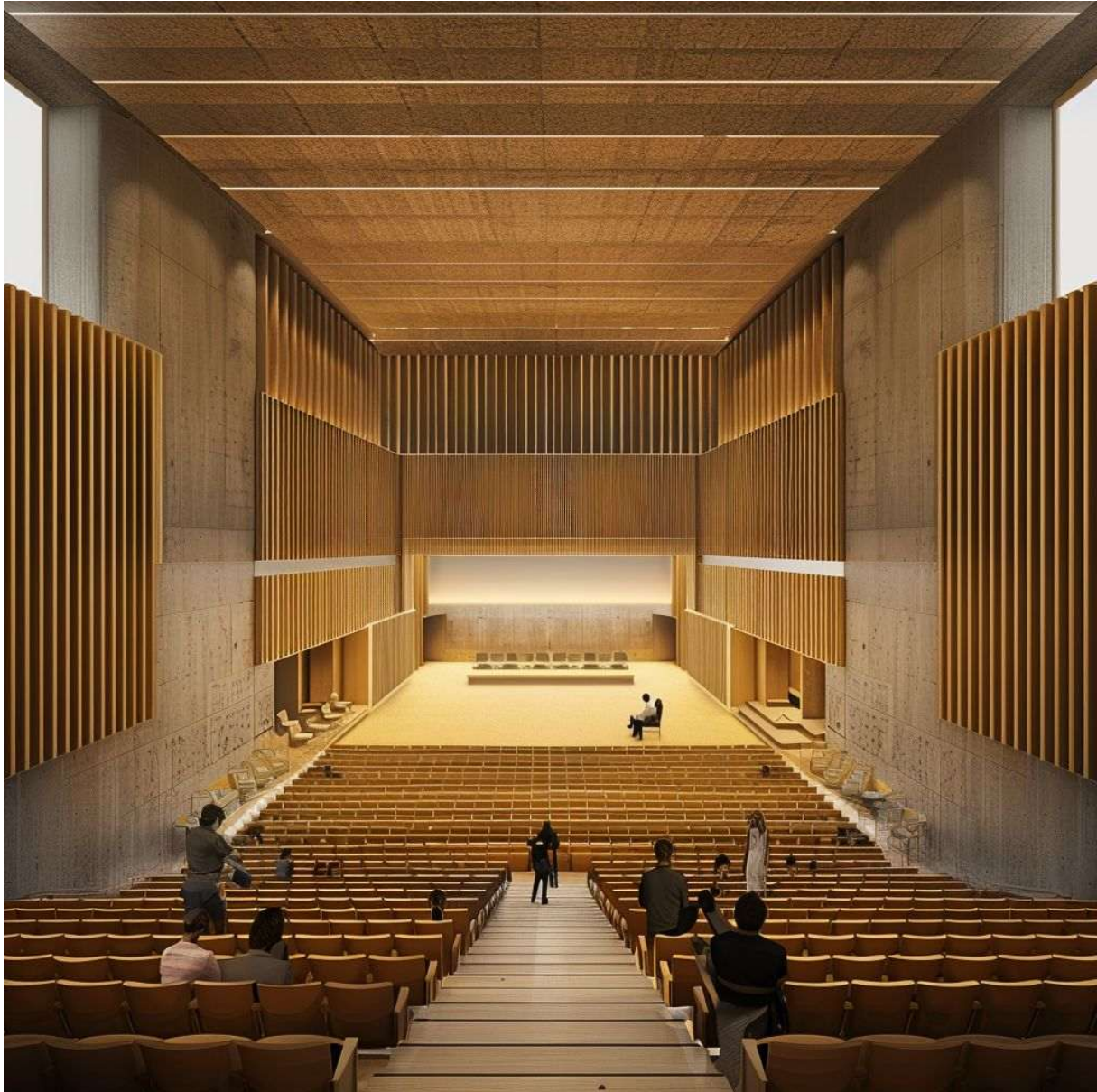
the daylight-envelope halls (2, 7, partly 6), the classical frontal acoustic halls (3, 5, 8), the sculptural-experiential rooms (4, 6), and the ceremonial-symbolic typology (9). In architectural competition terms, page 3 feels the most technically grounded, page 6 the most ambitious, page 7 the most flexible, and page 9 the most iconic. If the goal is a high-level contemporary auditorium with both architectural distinction and real-world buildability, I would develop pages 3, 6, and 8 as the strongest strategic trio: one rational, one visionary, one balanced.



Clerestory Arena

This concept proposes a daylight-driven, semi-enveloping auditorium organized around a gently asymmetrical arena geometry. The seating bowl is articulated in sweeping radial arcs, producing strong visual convergence toward the performance floor while preserving lateral intimacy. The defining architectural element is the continuous clerestory perimeter, screened by a sequence of deep vertical fins that modulate glare, soften solar ingress, and establish a rhythmic luminous envelope. The ceiling and wall surfaces read as a monolithic sculpted shell, likely conceived in board-formed concrete or a high-performance mineral composite, paired with timber soffits and integrated linear lighting. The overall effect is civic, calm, and tectonically legible.

Design thoughts: This scheme is particularly convincing as a hybrid between ceremonial hall and performance venue. I would push the concept further by carefully calibrating the clerestory apertures for acoustic isolation, introducing concealed variable blackout systems, and refining the seating rake to ensure that the intimacy of the lower bowl is matched by equally strong sightlines on the opposite bank.



Hall of Timber Acoustics

This auditorium follows a strongly axial, shoebox-derived spatial logic, with a clear longitudinal orientation, steeply terraced audience seating, and a stage framed by vertically stratified acoustic wall fields. The side walls are defined by large timber fins or baffles mounted over a heavier mineral substrate, generating both visual gravitas and acoustic diffusion. The tall room volume, expressed through a deep coffering or panelized timber ceiling, suggests a reverberant but controllable sound environment suited to speech, chamber music, or amplified performance. The architecture relies on proportion, symmetry, and sectional height rather than sculptural exuberance.

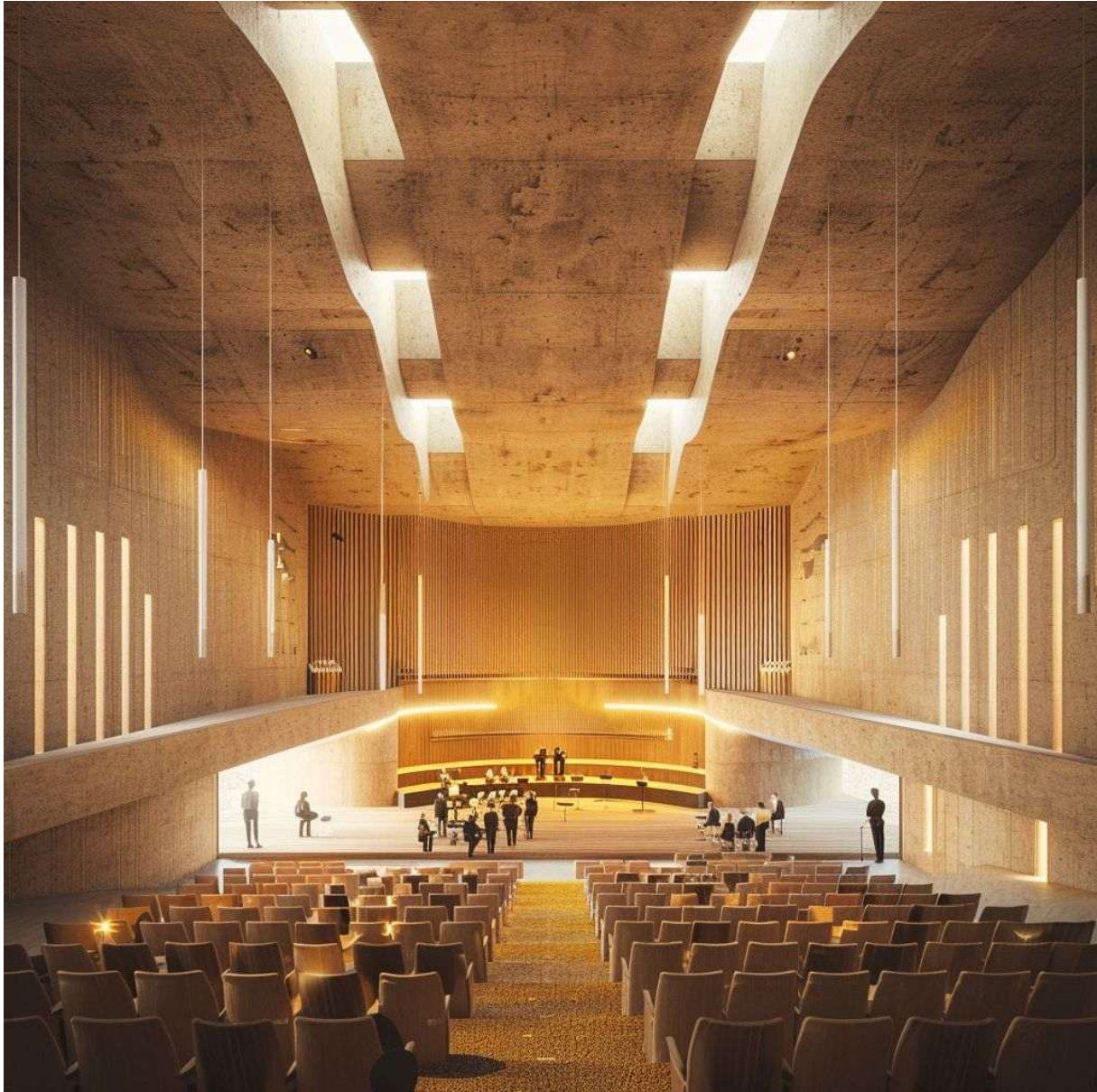
Design thoughts: This is the most disciplined and acoustic rational concept among the series. It would benefit from a more explicit integration of technical bridges, catwalk access, and adjustable reflector elements above stage level. A slightly more articulated rear wall could also improve late reflection behavior and reduce the perceptual flatness of the back-of-house termination.



Carved Light Auditorium

This proposal is characterized by a highly expressive interior section in which the ceiling becomes the primary acoustic and spatial protagonist. The overhead surface folds and undulates in a fluid, biomorphic manner, while suspended luminaires reinforce the verticality of the central nave-like volume. The room appears as a frontal performance hall with a centered aisle and a broad proscenium-free stage, framed by layered side-wall resonant elements and luminous vertical acoustic ribs. Architecture seeks atmospheric intensity through warm materiality, soft curvature, and a sense of carved continuity.

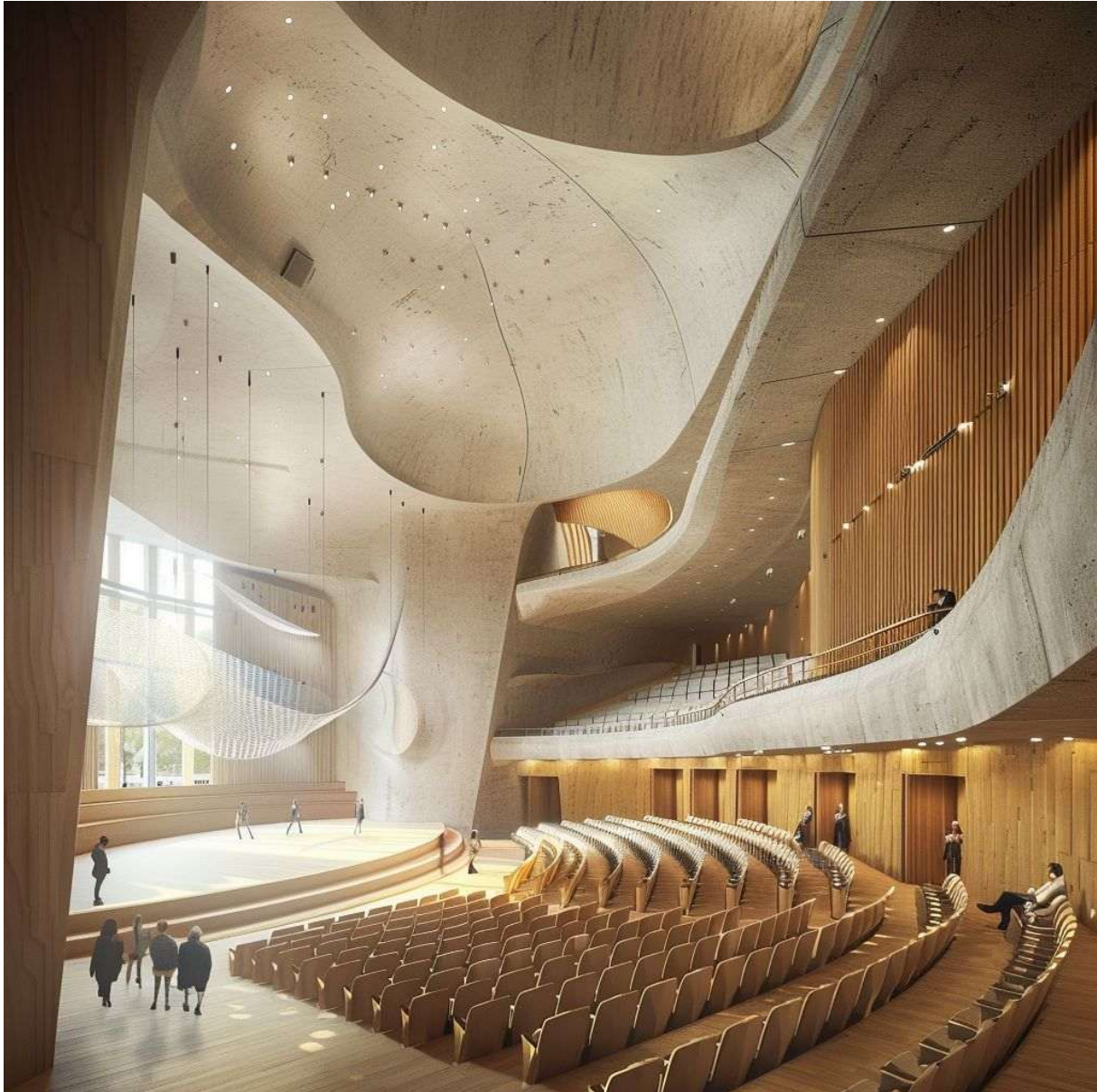
Design thoughts: The scheme has strong experiential power and would likely produce a memorable pre-performance ambience. Its success, however, would depend on translating the sculptural ceiling into a buildable system with controlled reflection angles, maintenance access, and realistic tolerance management. I would also test whether the formal richness of the ceiling competes with, rather than supports, the visual primacy of the stage.



The Spine Hall

This concept presents a more austere, monumental hall typology, defined by a central overhead spine or folded ceiling beam system that structures both light and section. The volume is longitudinal and frontal, with a relatively broad stage opening and audience seating arranged in direct, efficient rows. Vertical slot lighting in the side walls and suspended pendants establish a controlled luminous hierarchy, while the rear stage wall appears acoustically treated through fine timber slatting. The hall has a distinctly institutional character, suggesting robustness, clarity, and multi-purpose adaptability.

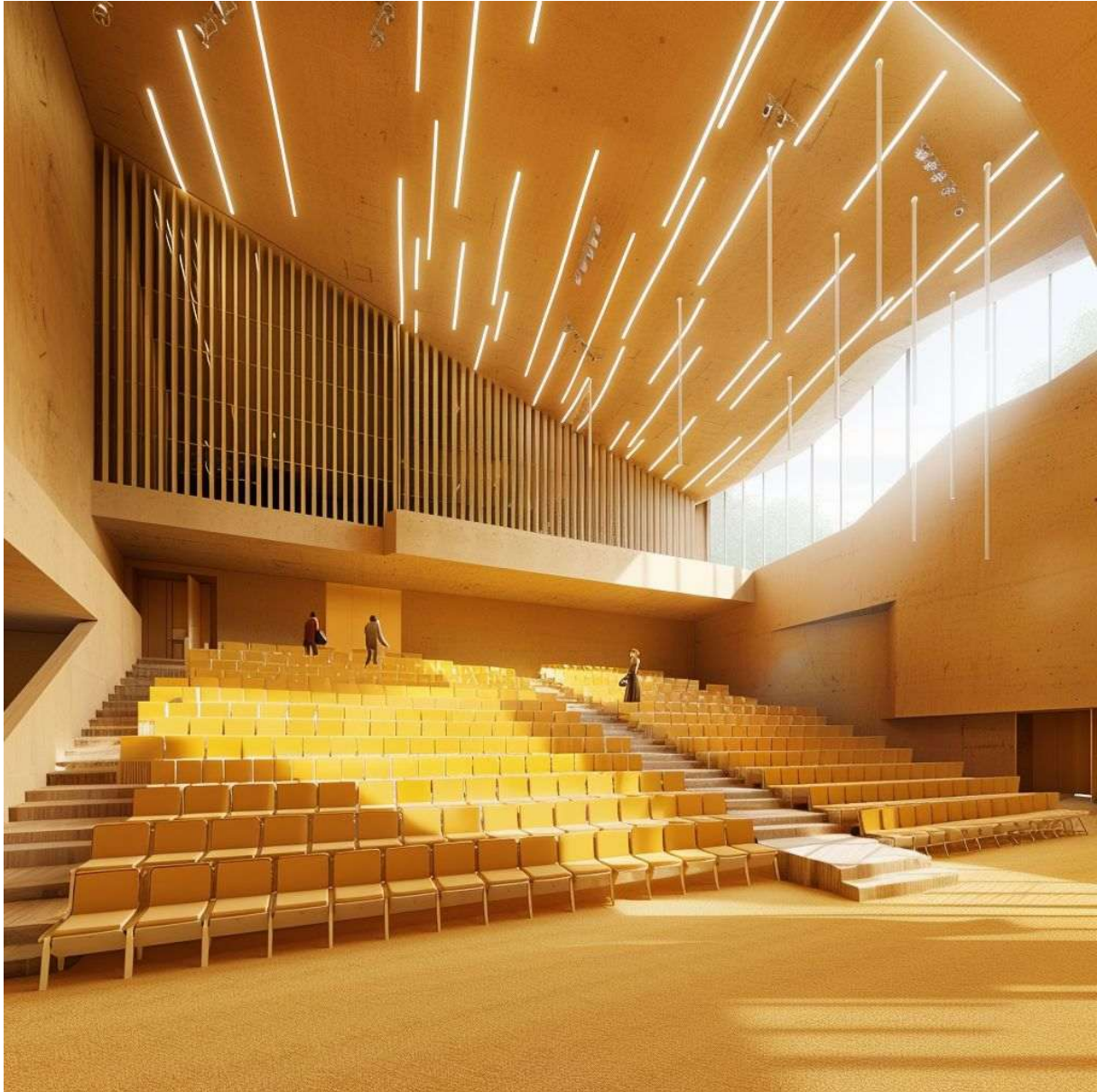
Design thoughts: This is a credible solution for a civic auditorium requiring flexibility and restrained formal language. I would explore whether the ceiling spine could become more than a visual motif by incorporating acoustic reflectors, displacement air distribution, or service integration. The stage edge and forestage could also be developed further to enhance performer-audience reciprocity.



Continuous Shell Auditorium

This concept presents a more austere, monumental hall typology, defined by a central overhead spine or folded ceiling beam system that structures both light and section. The volume is longitudinal and frontal, with a relatively broad stage opening and audience seating arranged in direct, efficient rows. Vertical slot lighting in the side walls and suspended pendants establish a controlled luminous hierarchy, while the rear stage wall appears acoustically treated through fine timber slating. The hall has a distinctly institutional character, suggesting robustness, clarity, and multi-purpose adaptability.

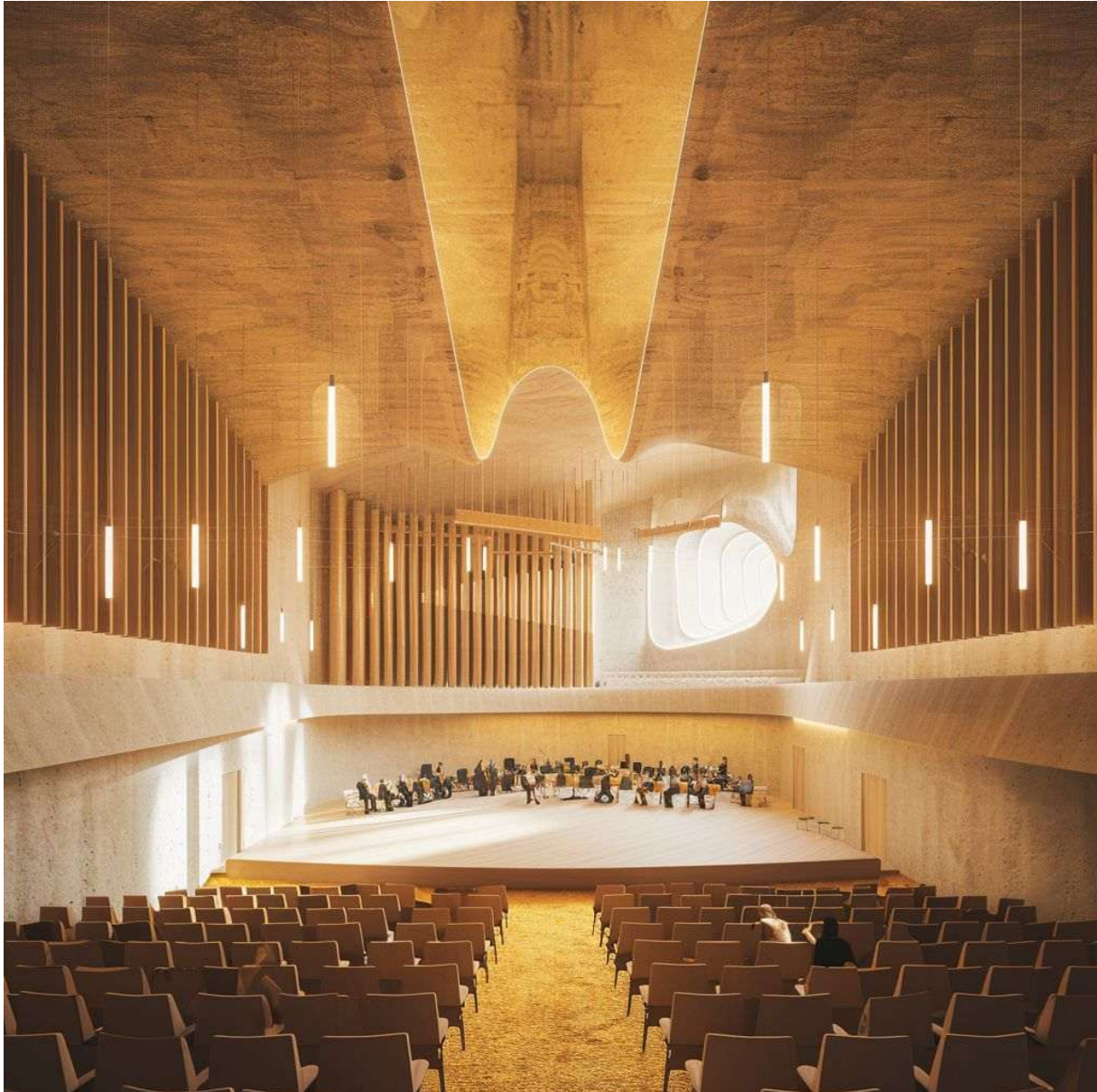
Design thoughts: This is a credible solution for a civic auditorium requiring flexibility and restrained formal language. I would explore whether the ceiling spine could become more than a visual motif by incorporating acoustic reflectors, displacement air distribution, or service integration. The stage edge and forestage could also be developed further to enhance performer-audience reciprocity.



Forum for Performance and Assembly

This concept reads almost as a reconfigurable lecture-performance chamber with a steep, compact tribune and a large open floor, allowing the room to oscillate between auditorium, rehearsal, assembly, and event space. The section is dominated by a strongly inclined ceiling plane populated with linear luminaires, while a clerestory band washes the upper enclosure with daylight. The architecture is sparse and direct, using exposed structural surfaces, vertical timber screening, and minimal formal interruption. It is perhaps the clearest example of a multi-functional rather than purely representational hall.

Design thoughts: The strength of this scheme lies in its programmatic elasticity. I would intensify that logic by introducing retractable seating zones, concealed technical grids, and a floor/service strategy that permits fast turnover between formats. Acoustically, the large exposed surfaces would need additional tuning to prevent excessive hardness during spoken-word use.



Chamber of Warm Resonance

This auditorium is conceived as a warm, immersive concert room with a strong frontal stage and a richly modulated upper volume. Tall vertical wall elements, likely acoustic diffusers, line both sides and converge visually toward the stage, while the ceiling incorporates a central contoured recess that acts as a large-scale acoustic canopy or reflector. The room is more intimate than monumental, with moderate seating rake and a stage proportion suitable for ensemble performance. Light is introduced selectively, allowing the timber-toned enclosure to dominate the sensorial reading of space.

Design thoughts: This is a highly plausible concert-hall concept because it balances formal character with acoustic intent. I would refine the stage-house transition, deepen the reflector geometry over the orchestra zone, and study the integration of variable acoustic curtains or banners so the hall can accommodate both chamber ensembles and speech-heavy programming.



Vaulted Organ Auditorium

This proposal establishes a near-sacral room character through its tall, narrow vertical openings, central organ wall, and dramatically vaulted ceiling geometry. The stage is terraced and could support choral, liturgical, or orchestral use, while the audience seating remains conventional and frontal. The sculpted ceiling appears to gather the room upward toward a central ridge, reinforcing axially and enhancing the symbolic importance of the organ backdrop. Materially, the space is warm and monolithic, with a tactile continuity that recalls carved stone or rammed-earth-like mass paired with timber detailing.

Design thoughts: This concept has the strongest identity as a ceremonial or music-focused hall with strong institutional symbolism. I would preserve that dignity but tighten the stage geometry, improve the visual connection between audience floor and performance platform, and verify whether the vertical apertures can deliver daylight without compromising thermal control, black-out capacity, and organ acoustics.